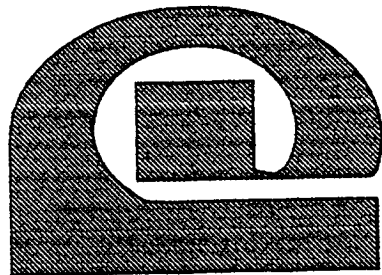


PARTS MANNUAL

FOR



**CRITTENDEN
CONVERSION
CORPORATION**

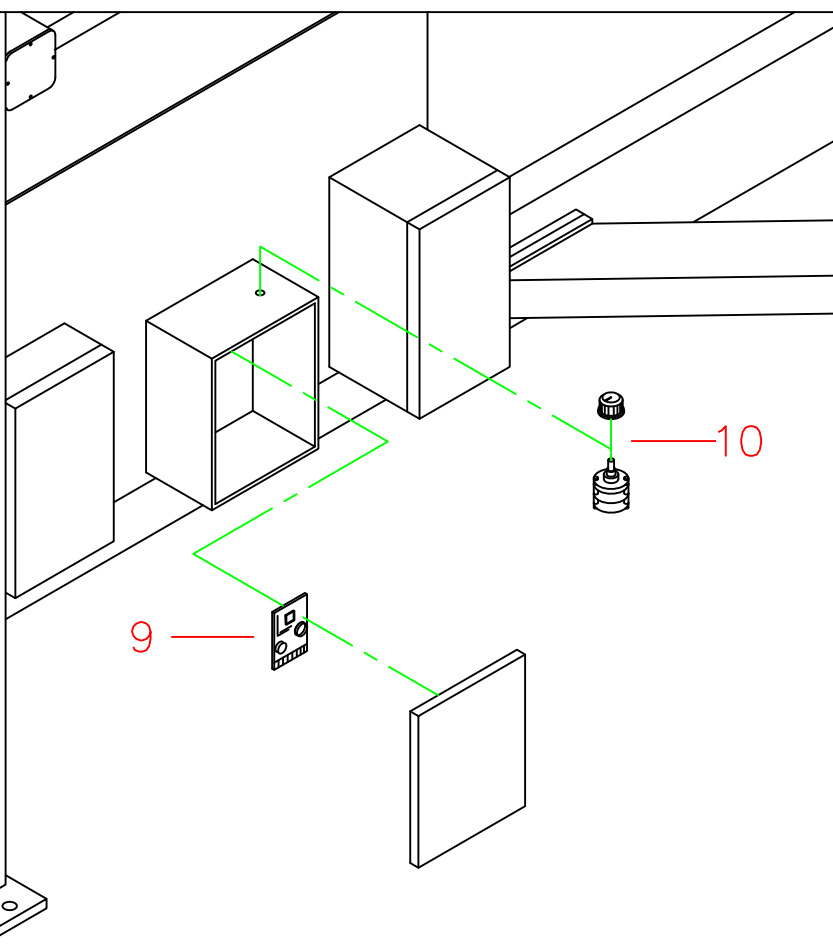
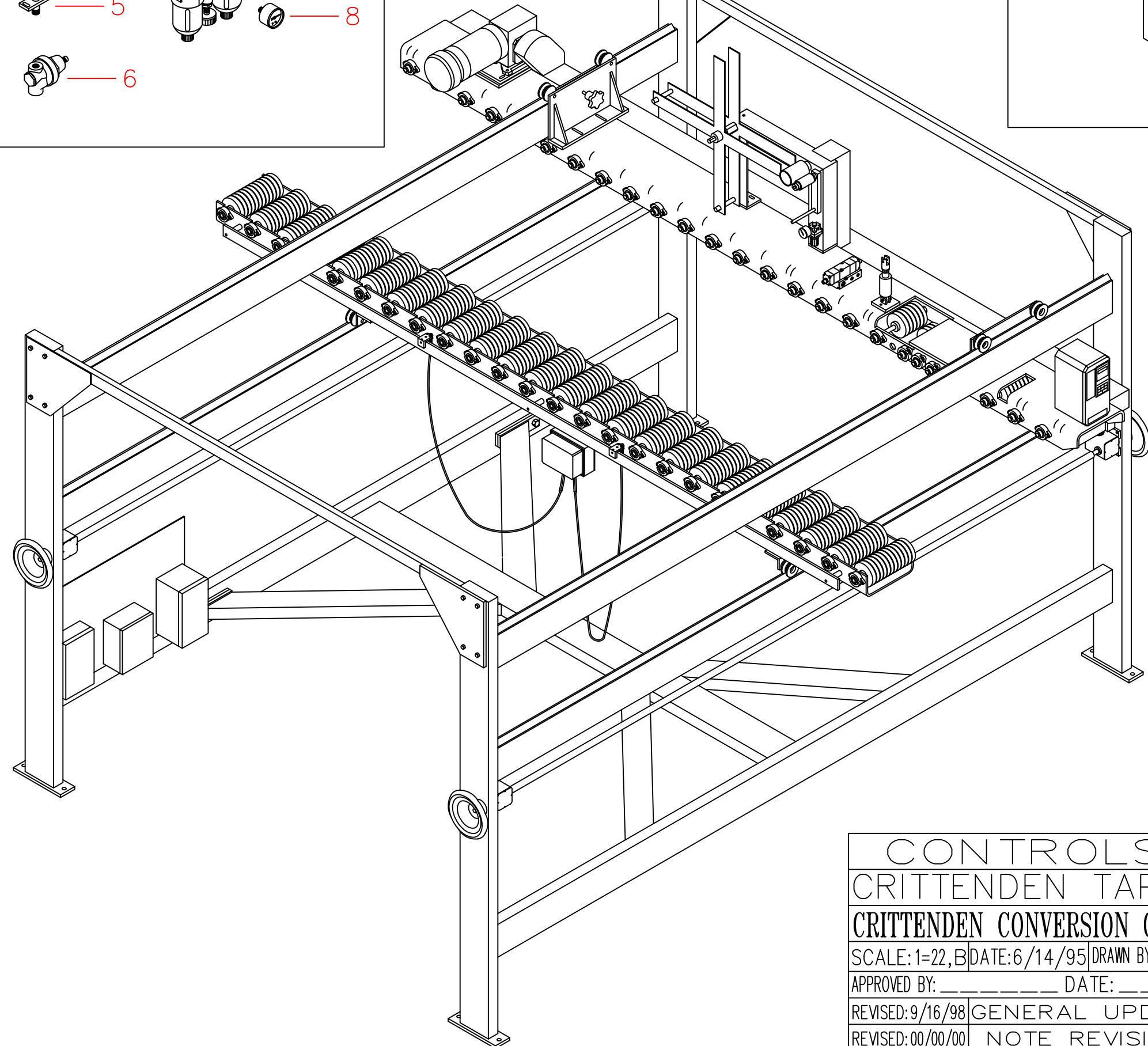
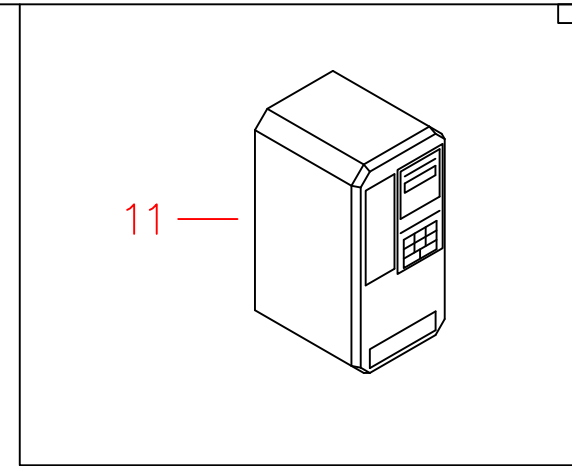
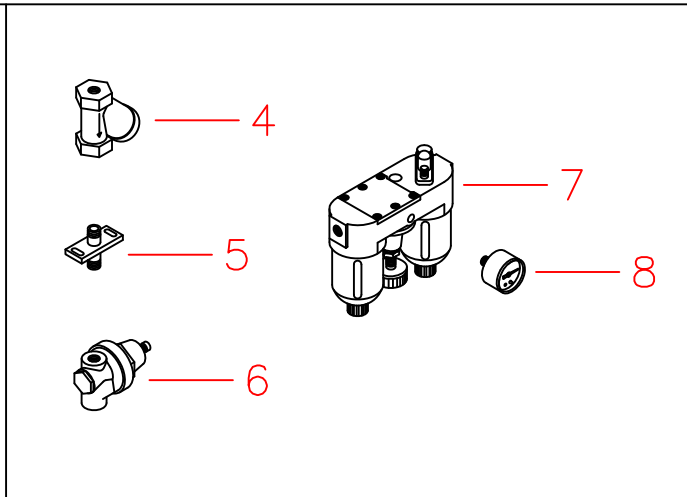
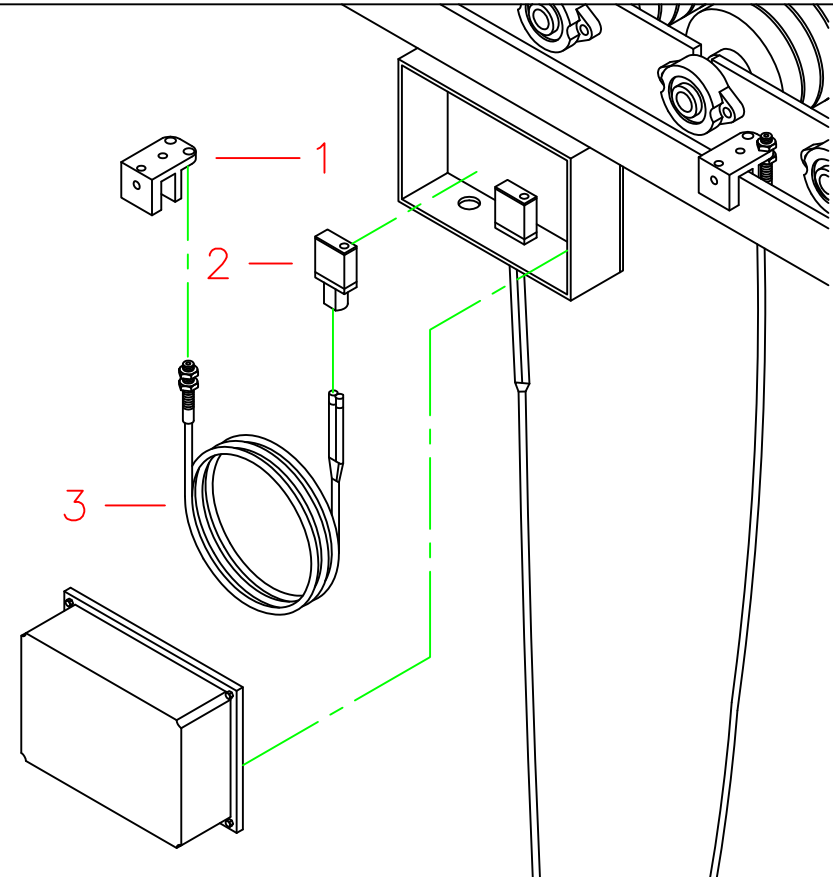
CRITTENDEN LINE DRIVE TAPER


**CRITTENDEN CONVERSION CORPORATION
INVENTORY ITEM LISTING**

TAPER CONTROL

REF. DRAWING: 30I001-A

REF. NO.	PART NO.	DESCRIPTION
1	TC300-BKT	FIBRE OPTIC CABLE BRACKET
2	SM-312F	FIBRE OPTIC SENSOR HEAD
3	BT-26S	FIBRE OPTIC ST ST CABLE 6'
4	C3253	WATER STRAINER
5	C3173	FLOAT MOUNTING PLATE ASSY.
6	C3254	WATER PRESSURE REGULATOR
7	AU200-02GBK	SMC FRL ASSEMBLY
8	K-10	1/8" NPT GAGE
9	TC-200-MOD	TAPER CONTROL MODULE
10	TCSW-1	GLUE/TAPE 3-POSITION SWITCH
11	C3255	VAR. FREQUENCY AC CONTROLLER



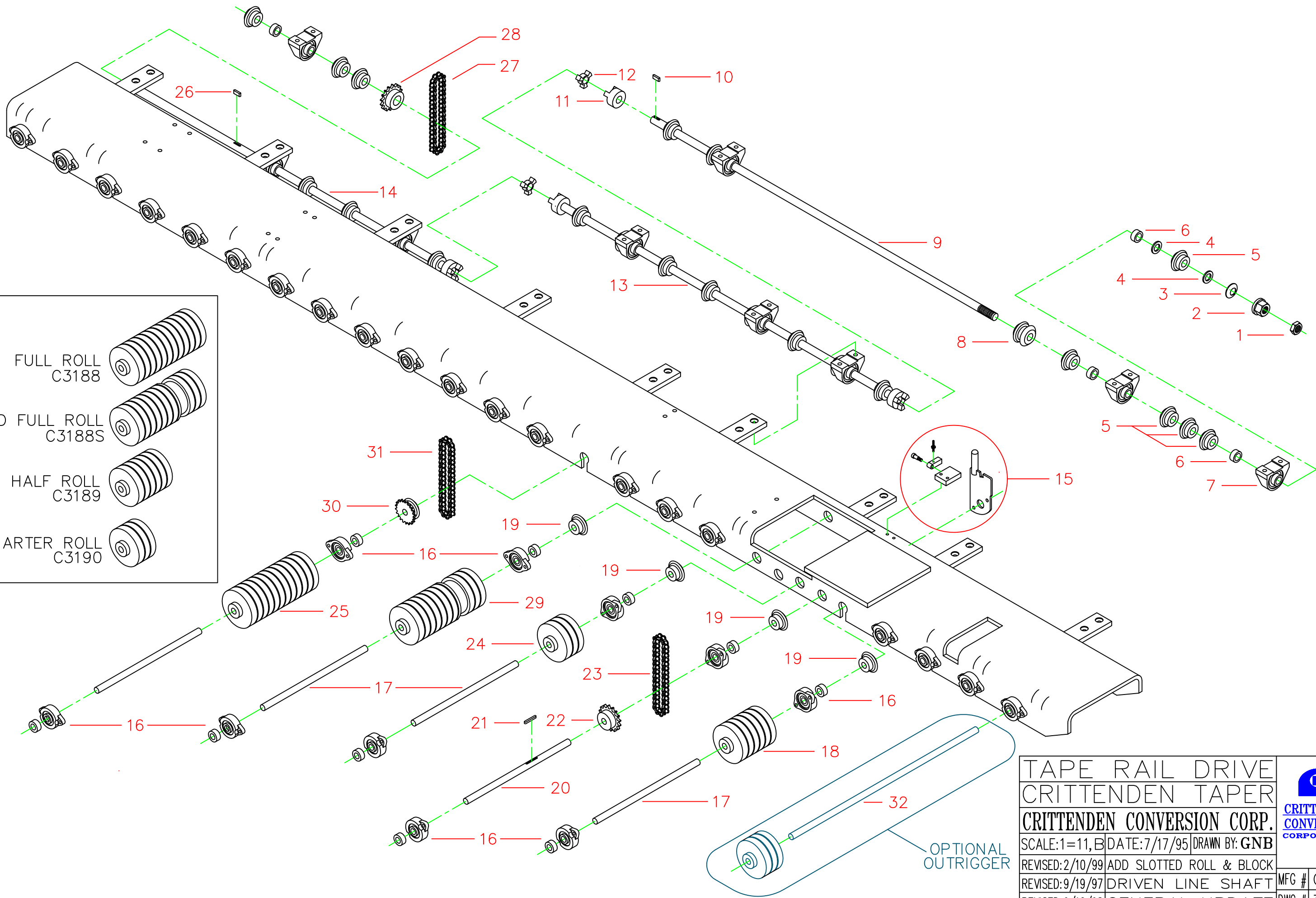
CONTROLS		
CRITTENDEN TAPER		
CRITTENDEN CONVERSION CORP.		CRITTENDEN CONVERSION CORPORATION
SCALE: 1=22, B	DATE: 6/14/95	DRAWN BY: GNB
APPROVED BY: _____	DATE: _____	
REVISED: 9/16/98	GENERAL UPDATE	MFG # 0000
REVISED: 00/00/00	NOTE REVISION	DWG # 301001-A

**CRITTENDEN CONVERSION CORPORATION
INVENTORY ITEM LISTING**

TAPE RAIL-DRIVE

REF. DRAWING: 30I004-A

REF. NO.	PART NO.	DESCRIPTION
1	C3242	JAM NUT
2	C3243	FLANGED NUT
3	C3244	BELLEVILLE SPRING WASHER
4	C3245	FRICTION DISC
5	C3211	SINGLE BEVEL GEAR 3/4 BORE
6	C3246	THRUST COLLAR
7	C3231	L.S. PILLOW BLOCKS
8	C3212	DOUBLE BEVEL GEAR
9	C3222	L.S. 46-1/8" KEYWAY & THREAD
10	C3247	KEY
11	C3232	LINE SHAFT COUPLING ASSEMBLY
12	C3233	COUPLING SPIDER, HYTREL
13	C3223	L.S. 46-1/2" KEYWAY BOTH ENDS
14	C3224	L.S. 43-1/2" KEYWAY END & DRIVE
15	C3218	HEAD THROWOUT CLUTCH ASSEMBLY
16	C3191	CONVEYOR BEARING ASSEMBLY
17	C3193G	TOP CONVEYOR SHAFT-GEAR DRIVE
18	C3189	HALF CONVEYOR ROLL
19	C3210	SINGLE BEVEL GEAR 5/8 BORE
20	C3196	HEAD DRIVE SHAFT-DRIVEN
21	C3248	KEY
22	C3201	HEAD DR/PF SPKT 35BS20 5/8
23	C3249	HEAD DRIVE CHAIN # 35
24	C3190	QUARTER CONVEYOR ROLL
25	C3188	FULL CONVEYOR ROLL
26	C3250	KEY
27	C3251	LINE DRIVE CHAIN
28	C3228	L.S. DRIVE SPROCKET 40BS-14
29	C3188S	FULL SLOTTED ROLL
30	C3219	BEVEL GEAR/SPROCKET COMBO
31	C3252	TAPE DISPENSER DRIVE CHAIN
32	C3229	O.B. ROLL GEAR SHAFT, TOP 26"



- FULL ROLL
C3188
- SLOTTED FULL ROLL
C3188S
- HALF ROLL
C3189
- QUARTER ROLL
C3190

TAPE RAIL DRIVE		
CRITTENDEN TAPER		
CRITTENDEN CONVERSION CORP.		
SCALE: 1=11, B	DATE: 7/17/95	DRAWN BY: GNB
REVISED: 2/10/99	ADD SLOTTED ROLL & BLOCK	
REVISED: 9/19/97	DRIVEN LINE SHAFT	
REVISED: 9/16/98	GENERAL UPDATE	



MFG # 0374
DWG # 301004-A

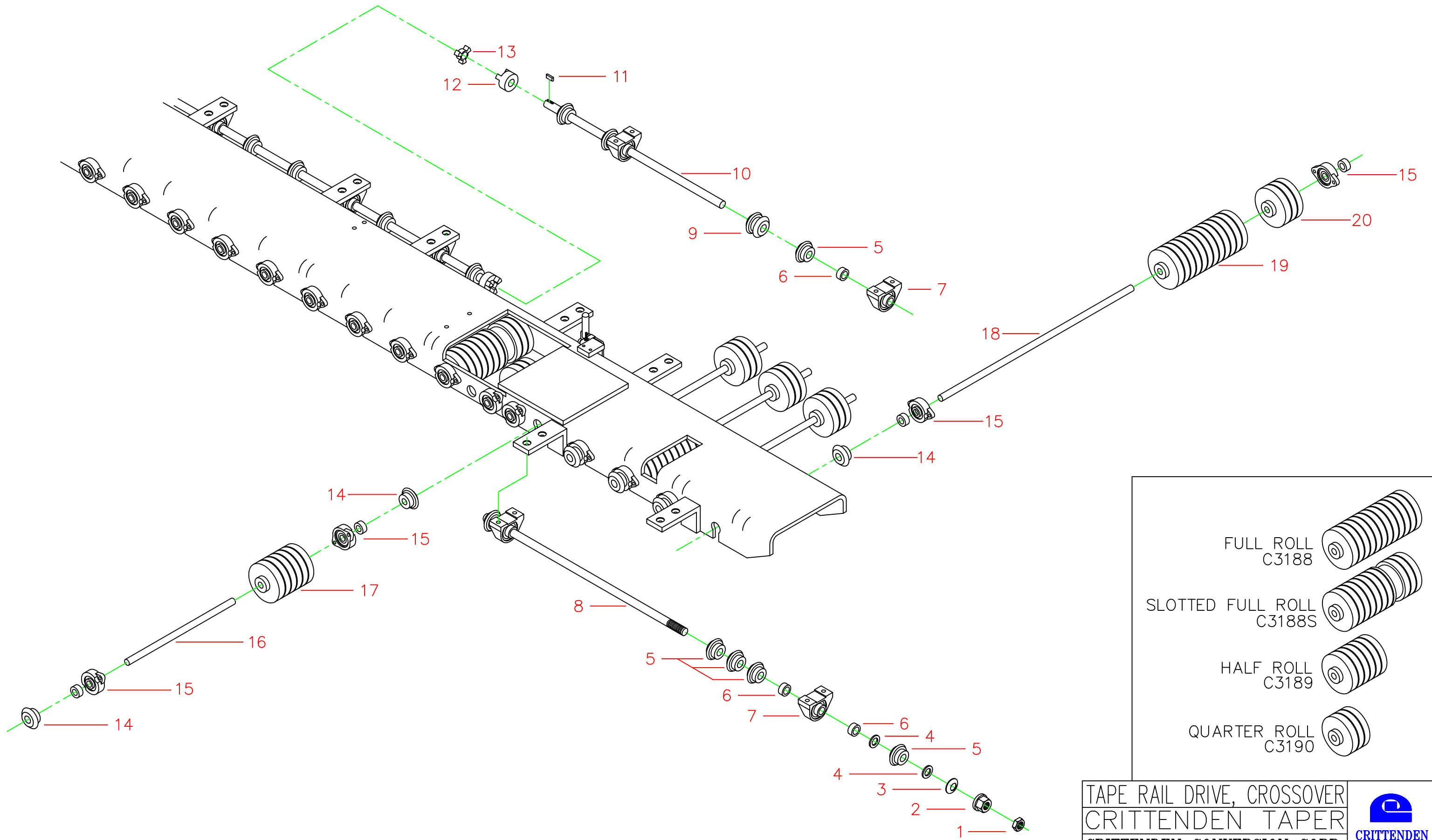
OPTIONAL
OUTRIGGER

**CRITTENDEN CONVERSION CORPORATION
INVENTORY ITEM LISTING**

**UPPER TAPE RAIL DRIVE
CROSSOVER**

REF. DRAWING: 30I009-A

REF. NO.	PART NO.	DESCRIPTION
1	C3242	JAM NUT
2	C3243	FLANGED NUT
3	C3244	BELLEVILLE SPRING WASHER
4	C3245	FRICTION DISC
5	C3211	SINGLE BEVEL GEAR 3/4 BORE
6	C3246	THRUST COLLAR
7	C3231	L.S. PILLOW BLOCKS
8	C3220	L.S. X-OVER 26" THREADED END
9	C3212	DOUBLE BEVEL GEAR
10	C3223	L.S. 46-1/2" KEYWAY BOTH ENDS
11	C3247	KEY
12	C3232	LINE SHAFT COUPLING ASSEMBLY
13	C3233	COUPLING SPIDER, HYTREL
14	C3210	SINGLE BEVEL GEAR 5/8 BORE
15	C3191	CONVEYOR BEARING ASSEMBLY
16	C3193G	TOP CONVEYOR SHAFT-GEAR DRIVE
17	C3189	HALF CONVEYOR ROLL
18	C3229	O.B. ROLL GEAR SHAFT, TOP 26"
19	C3188	FULL CONVEYOR ROLL
20	C3190	QUARTER CONVEYOR ROLL



FULL ROLL
C3188

SLOTTED FULL ROLL
C3188S

HALF ROLL
C3189

QUARTER ROLL
C3190

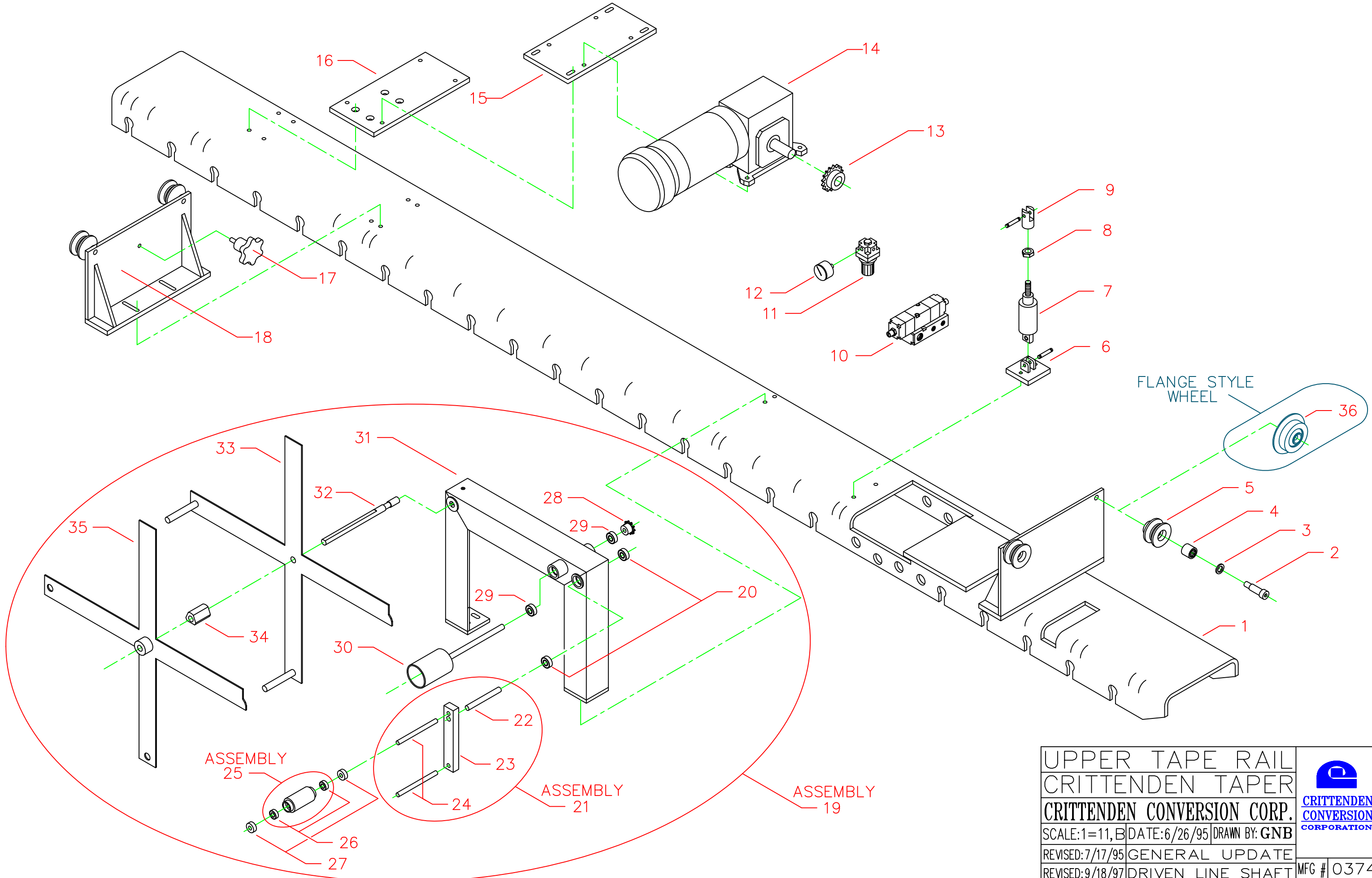
TAPE RAIL DRIVE, CROSSOVER		
CRITTENDEN TAPER		
CRITTENDEN CONVERSION CORP.		
SCALE: 1=11, B	DATE: 2/9/99	DRAWN BY: GNB
REVISED: 00/00/00	NOTE REVISION	
REVISED: 00/00/00	NOTE REVISION	
REVISED: 00/00/00	NOTE REVISION	
MFG #	0000	
DWG #	301009-A	

**CRITTENDEN CONVERSION CORPORATION
INVENTORY ITEM LISTING**


UPPER TAPER RAIL

REF. DRAWING: 30I003-A

REF. NO.	PART NO.	DESCRIPTION
1	C3208	GEAR DRIVEN TOP RAIL ASSEMBLY
2	C3235	SHOULDER BOLT
3	C3236	BEARING WASHER
4	C3115	ROLLER BNG LOWER SHAFT
5	C3237	VEE WHEEL BEARING ASSY. W/BNG
18	C3261	TOP RAIL MOUNTING BRACKET
17	C3260	STAR KNOB
15	C3258	MOTOR SLIDING PLATE
14	C3257	1 HP DRIVE MOTOR/GEAR BOX ASSY.
19	C3262	TAPE DISPENSER ASSEMBLY
31	C3268	TAPE DISPENSER STAND ONLY
32	C3269	TAPE SUPPORT SHAFT
33	C3270	TAPE GUIDE-INSIDE
35	C3271	TAPE GUIDE-OUTSIDE
34	C3204	TAPE CORE BUSHING
30	C3205	PRE-FEED ROLL/SHAFT ASSY.
29	C3122	TAPE PRE-FEED BEARING
28	C3267	TAPE PRE-FEED SPROCKET
22	C3264	TAPE PRE-FEED PIVOT SHAFT
23	C3265	PRE-FEED ARM-BARE
20	C3122	BNG IDLER ASSY/KNIFE ARM
21	C3206	PRE-FEED ARM ASSEMBLY
24	C3266	TAPE PRE-FEED SHAFT
25	C3202	TAPE PRE-FEED ROLL W/BNGS
26	C3139	BNG TF ROLLER/IDLER GEAR
27	C3160	IDLER GR COLLAR/TR STR GD
12	K-10	1/8" NPT GAGE
11	NAR2000-N01	MINI-REGULATOR
10	NVS-4214-0209-F	4-WAY SOLENOID VALVE
9	A-D 625RC	ROD CLEVIS
8	C3256	JAM NUT
7	A-D 875	1.5 X .875 KNIFE CYLINDER
6	A-D 625MC	MAIN CLEVIS
13	C3207	MOTOR SPROCKET 40BS16 7/8
16	C3259	DRIVE MOTOR BASE PLATE
36	C3215	FLANGED WHEEL-CONVEYOR RAIL



UPPER TAPE RAIL		
CRITTENDEN TAPER		
CRITTENDEN CONVERSION CORP.		
SCALE: 1=11, B	DATE: 6/26/95	DRAWN BY: GNB
REVISED: 7/17/95	GENERAL UPDATE	
REVISED: 9/18/97	DRIVEN LINE SHAFT	
REVISED: 9/16/98	GENERAL UPDATE	



**CRITTENDEN
CONVERSION
CORPORATION**

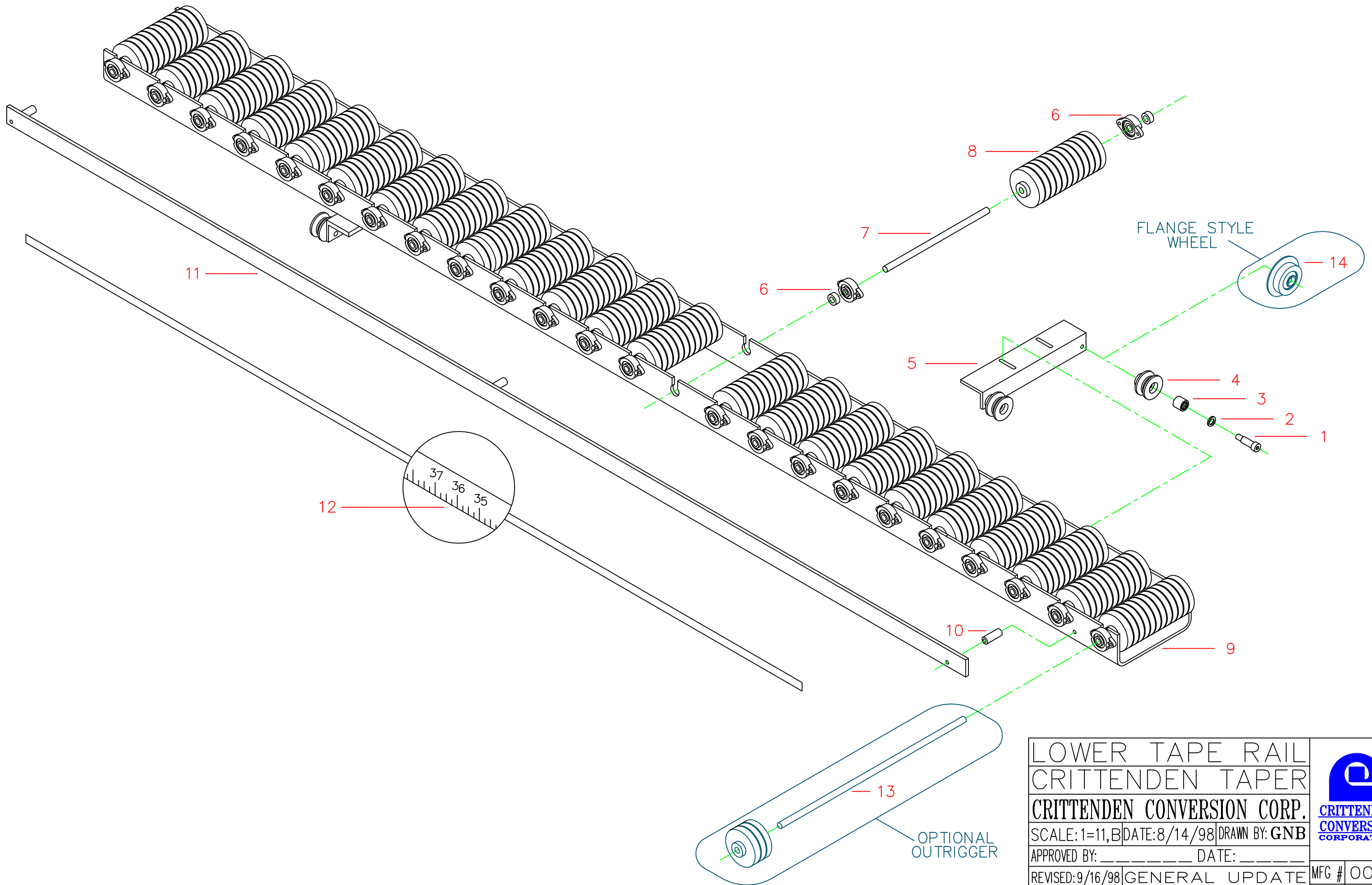
MFG #	0374
DWG #	301003-A

**CRITTENDEN CONVERSION CORPORATION
INVENTORY ITEM LISTING**

LOWER TAPER RAIL

REF. DRAWING: 30I002-A

REF. NO.	PART NO.	DESCRIPTION
1	C3235	SHOULDER BOLT
2	C3236	BEARING WASHER
3	C3115	ROLLER BNG LOWER SHAFT
4	C3237	VEE WHEEL BEARING ASSY. W/BNG
5	C3238	LOWER RAIL MOUNTING BRACKET
6	C3191	CONVEYOR BEARING ASSEMBLY
7	C3199	LOWER CONVEYOR SHAFT
8	C3188	FULL CONVEYOR ROLL
9	C3209	NEW BOTTOM RAIL ASSEMBLY
10	C3239	SPACER
11	C3240	PHOTO EYE RAIL
12	C3241	STEEL TAPE MEASURE R TO L
13	C3230	O.B. ROLL SHAFT, LOWER 24-5/8"
14	C3215	FLANGED WHEEL-CONVEYOR RAIL



LOWER TAPE RAIL		
CRITTENDEN TAPER		
CRITTENDEN CONVERSION CORP.		
SCALE: 1=11, B	DATE: 8/14/98	DRAWN BY: GNB
APPROVED BY: _____		DATE: _____
REVISED: 9/16/98	GENERAL UPDATE	
REVISED: 2/11/99	ADD OUTRIGGER & FLANGE WHEEL	



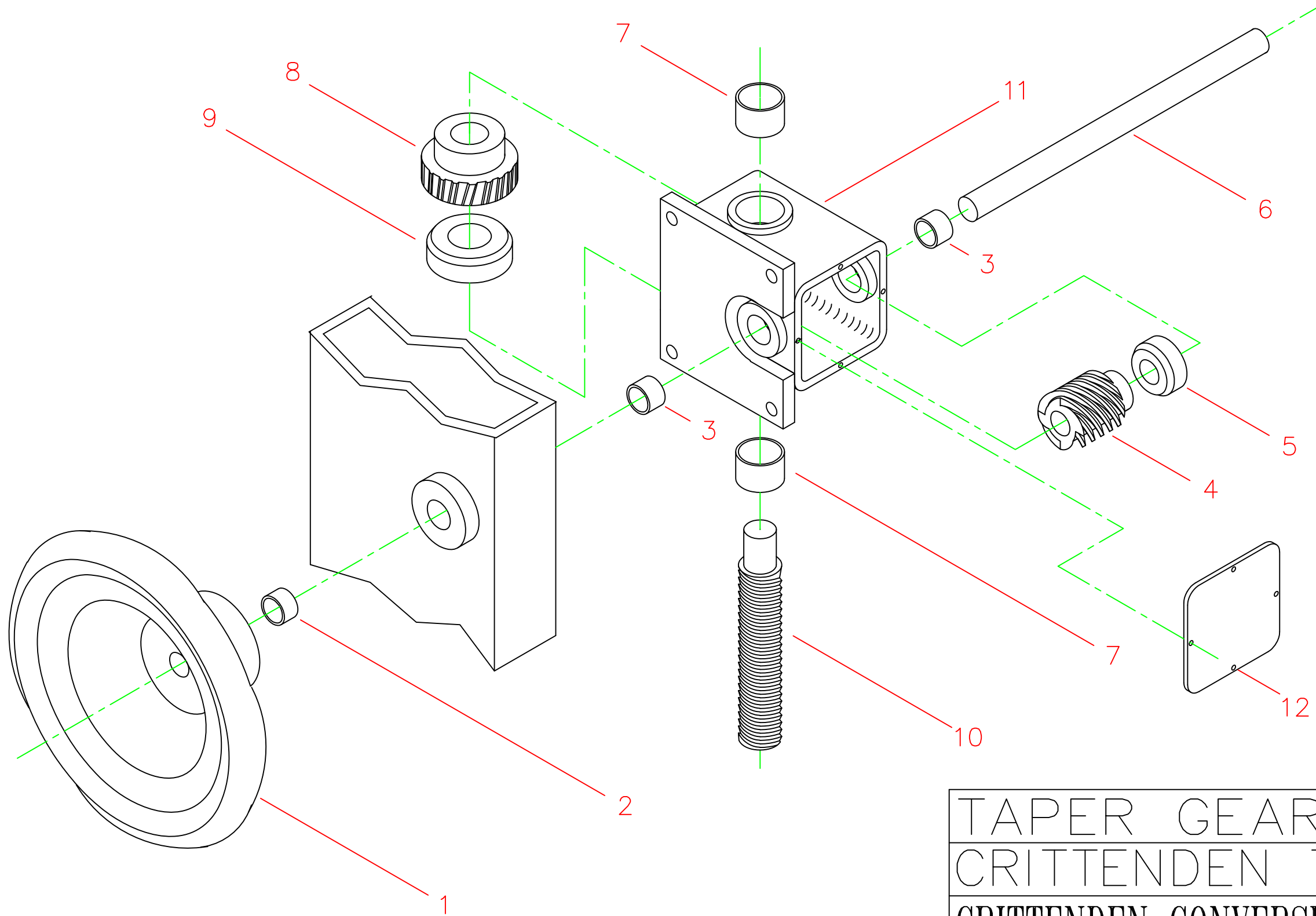
MFG #	0000
DWG #	301002-A

**CRITTENDEN CONVERSION CORPORATION
INVENTORY ITEM LISTING**

TAPER GEAR BOX ASSY.

REF. DRAWING: 30I006-A

REF. NO.	PART NO.	DESCRIPTION
	C3263	GEAR BOX ASSEMBLY
1	C3272	HANDWHEEL
2	C3273	BUSHING-OILITE
3	C3274	BUSHING-OILITE
4	C3275	WORM
5	C3276	BEARING, THRUST D3
6A	C3277	SHAFT, INPUT, OPERATOR 9-1/2"
6B	C3278	SHAFT, INPUT 5-1/2"
7	C3279	BEARING-OILITE
8	C3280	WORM GEAR
9	C3281	BEARING, THRUST D9
10	C3282	SCREW, LIFTING
11	C3283	HOUSING
12	C3284	COVER, HOUSING



TAPER GEAR BOX		
CRITTENDEN TAPER		
CRITTENDEN CONVERSION CORP.		
SCALE: 1=5, A	DATE: 6/16/95	DRAWN BY: GNB
APPROVED BY: _____		DATE: _____
REVISED: 9/16/98	GENERAL UPDATE	
REVISED: 00/00/00	NOTE REVISION	



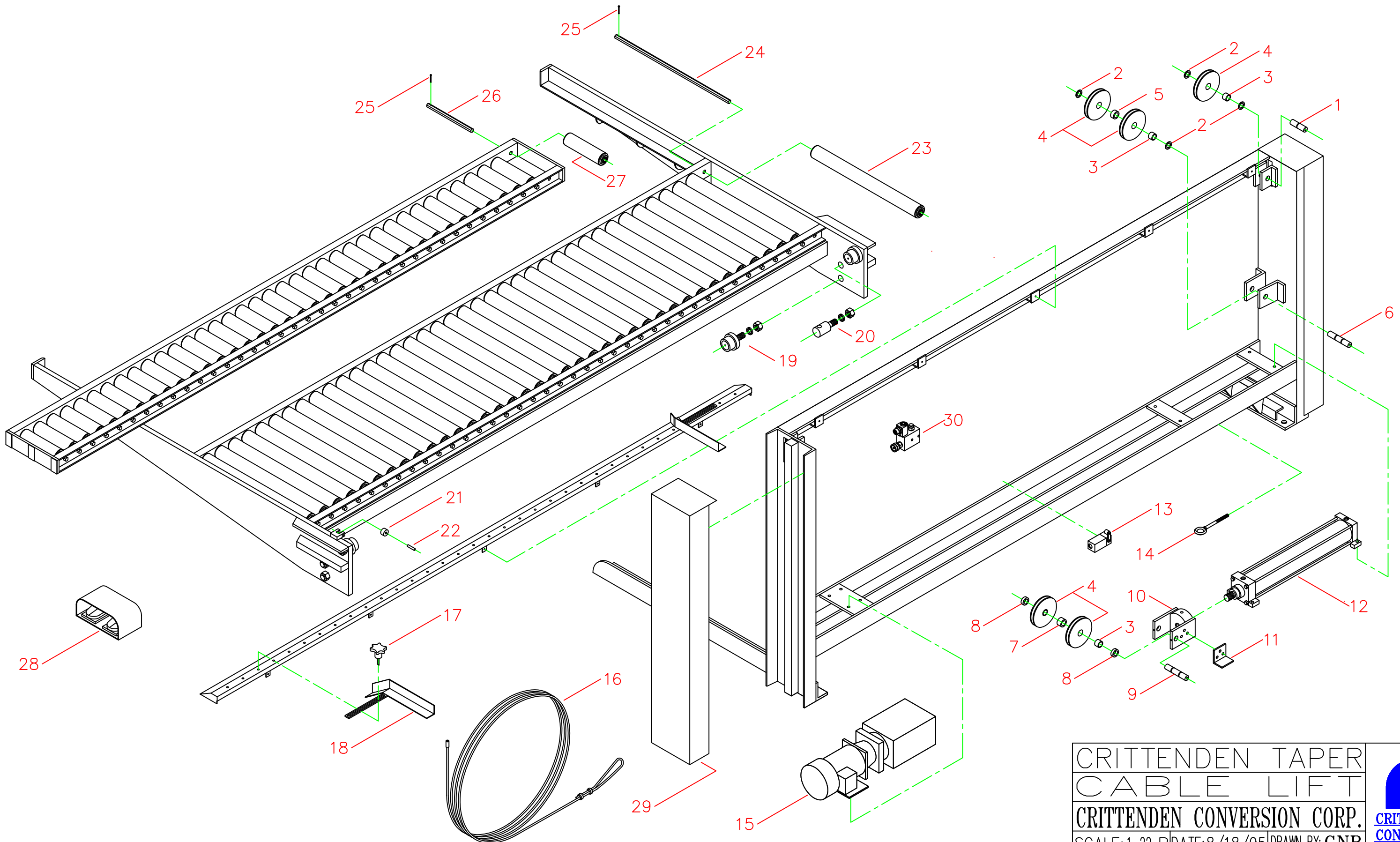
MFG #	0000
DWG #	301006-A

**CRITTENDEN CONVERSION CORPORATION
INVENTORY ITEM LISTING**

STITCHER CABLE LIFT

REF. DRAWING: 30I005-A

REF. NO.	PART NO.	DESCRIPTION
	C3500	60 X 120 ROLLER PLATFORM LIFT
1	C3501	ROLLER PIN. SINGLE
2	C3502	SPACER, 1/8"
3	C3503	BEARING/RACE ASSY, MR20N/MI16N
4	C3504	CABLE PULLEY ASSY W/BEARINGS
5	C3505	SPACER, 3/4"
6	C3506	ROLLER PIN, DOUBLE, 5-1/4"
7	C3507	CLEVIS SPACER, 1"
8	C3508	CLEVIS SPACER, 1/2"
9	C3509	CLEVIS PIN, 5-1/4"
10	C3510	CYLINDER ROD CLEVIS
11	C3511	CLEVIS GUIDE
12	C3512	CYLINDER, HYDRAULIC 4" X 24"
13	C3513	LIMIT SWITCH, TRAVEL
14	C3514	EYE BOLT, CABLE ADJUSTING
15	C3515	HYDRAULIC POWER UNIT
16	C3530	CABLE ASSEMBLY, 3/8" X 46'
17	C3516	START KNOB
18	C3517	BOX GUIDES, SET W/KNOBS
19	C3518	ROLLER ASSEMBLY, VERTICAL
20	C3519	CABLE ANCHOR
21	C3520	ROLLER, HORIZONTAL
22	C3521	PIN, HORIZONTAL ROLLER
23	C3522	CONVEYOR ROLLER ASSY. W/BNGS.
24	C3523	HEX ROD, LONG
25	C3524	COTTER PIN
26	C3525	HEX ROD, SHORT
27	C3526	CONVEYOR ROLLER ASSY. W/BRNS.
28	C3527	FOOT PEDAL ASSY.
29	C3528	GUARD, LEFT OR RIGHT
30	C3529	HYDRAULIC CONTROL VALVE



CRITTENDEN TAPER
 CABLE LIFT
 CRITTENDEN CONVERSION CORP.
 SCALE: 1=22, B DATE: 8/18/95 DRAWN BY: GNB
 APPROVED BY: _____ DATE: _____
 REVISED: 9/16/98 GENERAL UPDATE
 REVISED: 00/00/00 NOTE REVISION

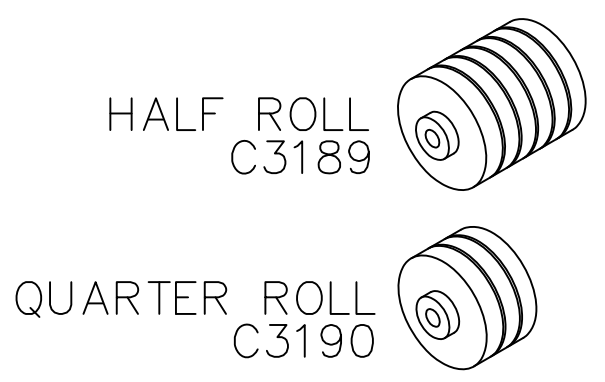
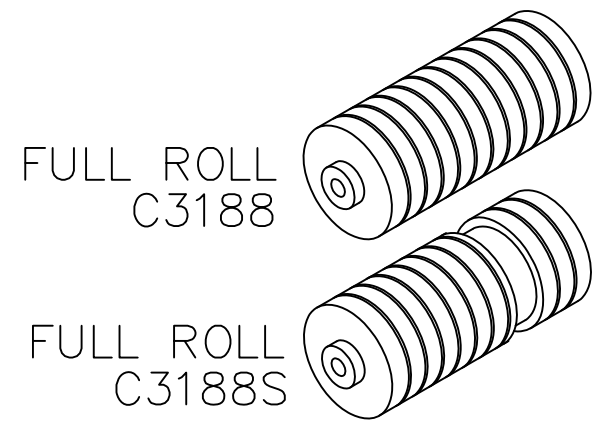
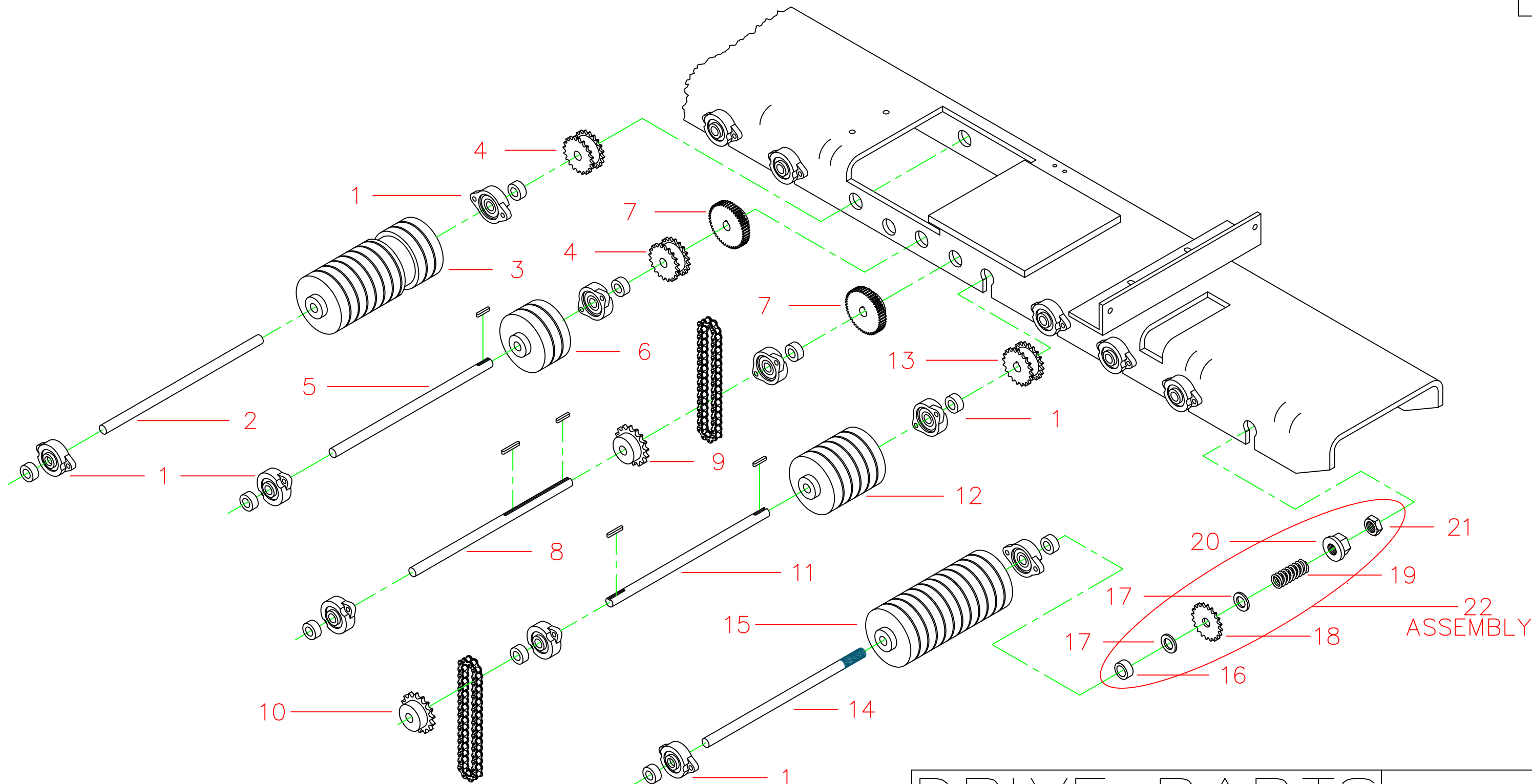


MFG # 0000
 DWG # 301005-A

General Taper - Drive Parts

Dwg# 30i010-A

Ref. #	Part #	Part Description
1	C3191	Conveyor Bearing Assembly
2	C3193	Top Conveyor Shaft
3	C3188S	Full Slotted Roll
4	C3192	Conveyor Drive Sprocket
5	C3197	Head Drive Shaft - Driving
6	C3190	Quarter Roll
7	C3200	Hardened Gear
8	C3196	Head Drive Shaft - Driving
9	C3201	Head Drive Sprocket, 35-BS20 x 5/8
10	C3203	Drive Sprocket, 40-BS14 x 5/8
11	C3198	Main Drive Shaft, 15"
12	C3189	Half Roll
13	C3192K	Conveyor Drive Sprocket, Keyed
14	C3194A	Safety Shaft
15	C3188	Full Conveyor Roll
16	C3246	Thrust Collar
17	C3245	Friction Disc
18	C3194B	Safety Sprocket
19	C3194C	Safety Spring
20	C3243	Flanged Nut
21	C3242	Jam Nut
22	C3194	Safety Shaft Assembly



DRIVE PARTS
GENERAL TAPER

CRITTENDEN CONVERSION CORP.

SCALE: 1=12, A | DATE: 8/28/2000 | DRAWN BY: GNB

APPROVED BY: _____ DATE: _____

REVISED: 00/00/00 | NOTE REVISION

REVISED: 00/00/00 | NOTE REVISION



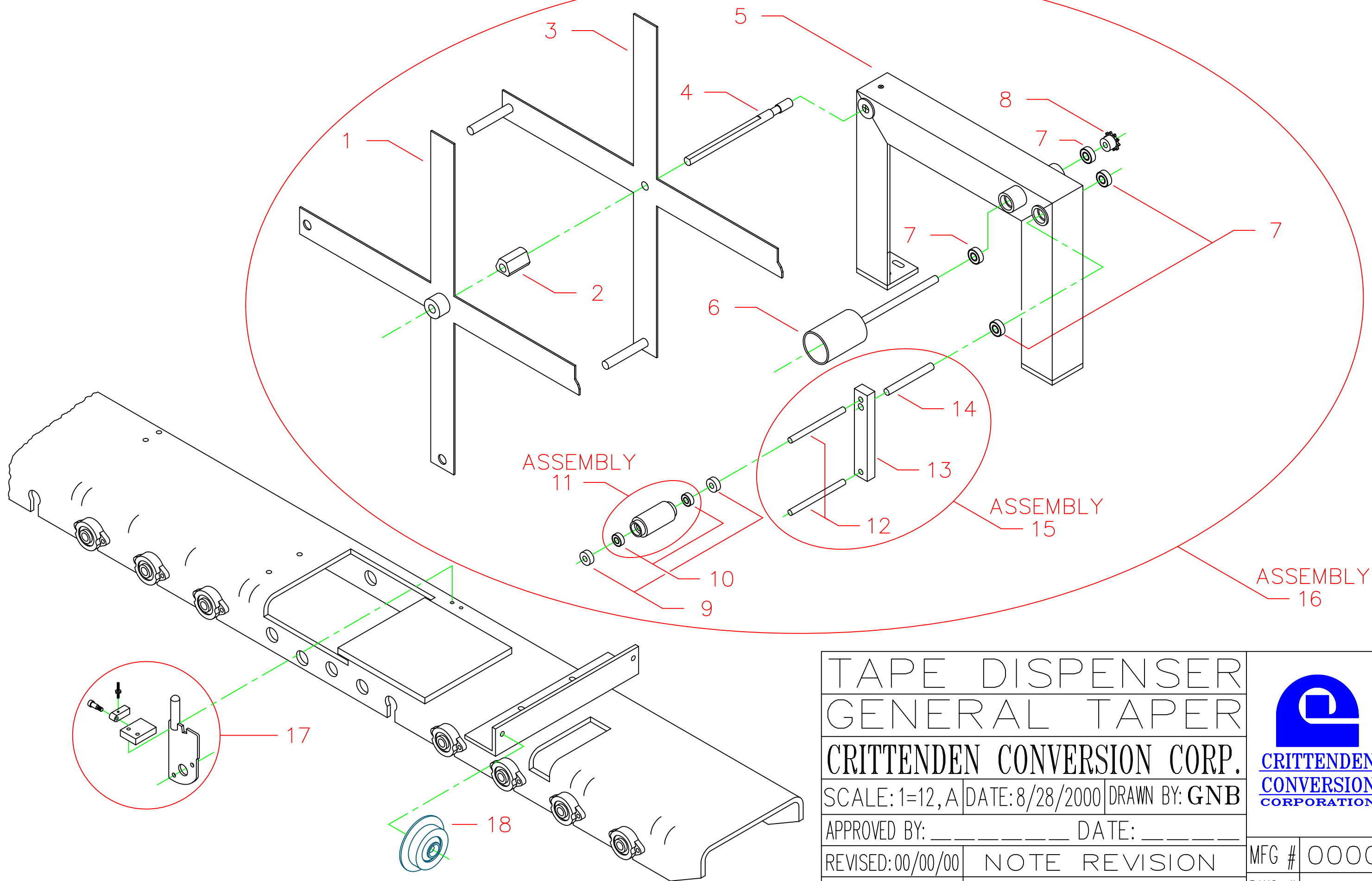
MFG # 0000

DWG # 301010-A

General Taper - Tape Dispenser

Dwg# 30i011-A

Ref. #	Part #	Part Description
1	C3271	Tape Guide - Outside
2	C3204	Tape Core Bushing
3	C3770	Tape Guide - Inside
4	C3269	Tape Support Shaft
5	C3268	Tape Dispenser Stand Only
6	C3205	Pre-feed Roll / Shaft Assembly
7	C3122	Bearing, Idler Assembly
8	C3267	Tape Pre-feed Sprocket
9	C3160	Tear Strip Shaft Collar
10	C3139	Bearing, Tape Feed Roller
11	C3202	Tape Pre-feed Roller w/Bearings
12	C3266	Tape Pre-feeder Shaft
13	C3265	Pre-feed Arm - Bare
14	C3264	Tape Pre-feed Pivot Shaft
15	C3206	Pre-feed Arm Assembly
16	C3262	Tape Dispenser Assembly
17	C3218	Head Throwout Clutch Assembly
18	C3215	Flange Wheel, Conveyor Rail



TAPE DISPENSER
GENERAL TAPER

CRITTENDEN CONVERSION CORP.

SCALE: 1=12, A | DATE: 8/28/2000 | DRAWN BY: GNB

APPROVED BY: _____ DATE: _____

REVISED: 00/00/00 | NOTE REVISION

REVISED: 00/00/00 | NOTE REVISION



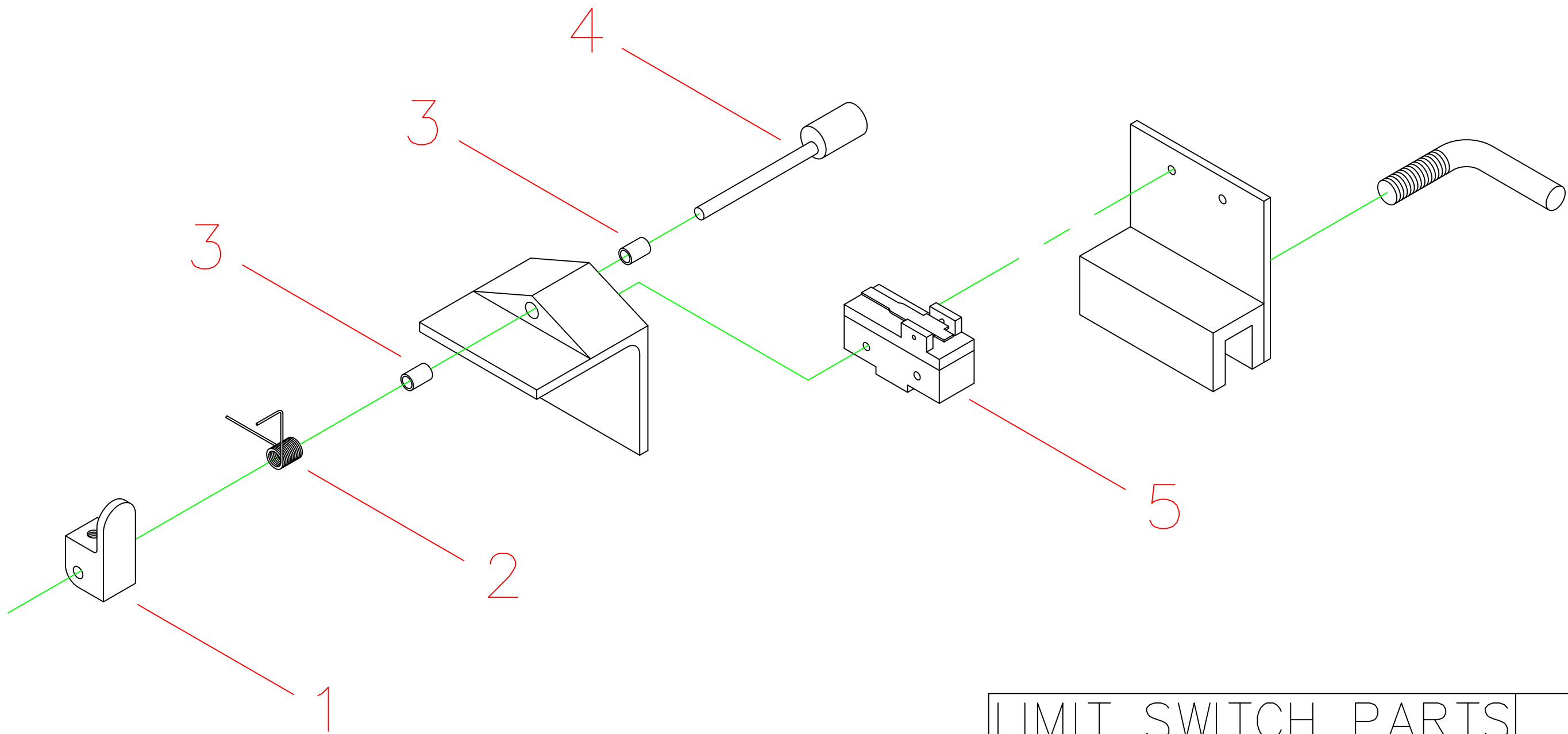
MFG # 0000

DWG # 301011-A

General Taper - Limit Switch

Dwg# 30i012-A

Ref. #	Part #	Part Description
1	C3295	Target Trip
2	C3296L	Spring - Left Hand
3	C3296R	Spring - Right Hand
4	C3298	Shaft Bushing
5	C3294	Cam Eccentric - Weldment
6	C3297	Limit Switch



LIMIT SWITCH PARTS
GENERAL TAPER

CRITTENDEN CONVERSION CORP.

SCALE: 1=3, A | DATE: 8/23/2000 | DRAWN BY: GNB

APPROVED BY: _____ DATE: _____

REVISED: 00/00/00 | NOTE REVISION

REVISED: 00/00/00 | NOTE REVISION



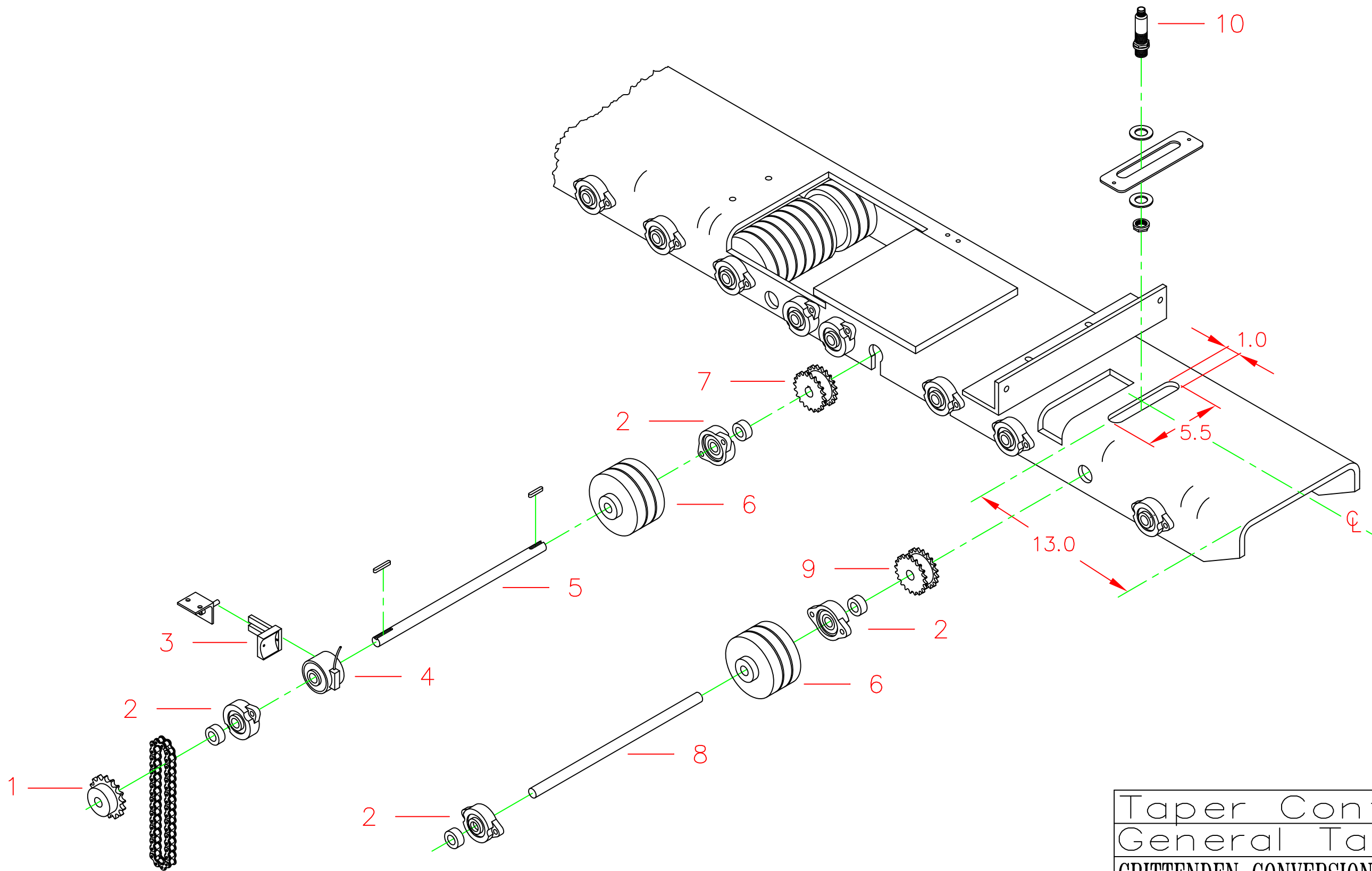
MFG # 0000

DWG # 30I012-A

General Taper - Drive Parts

Dwg# 30i013-A

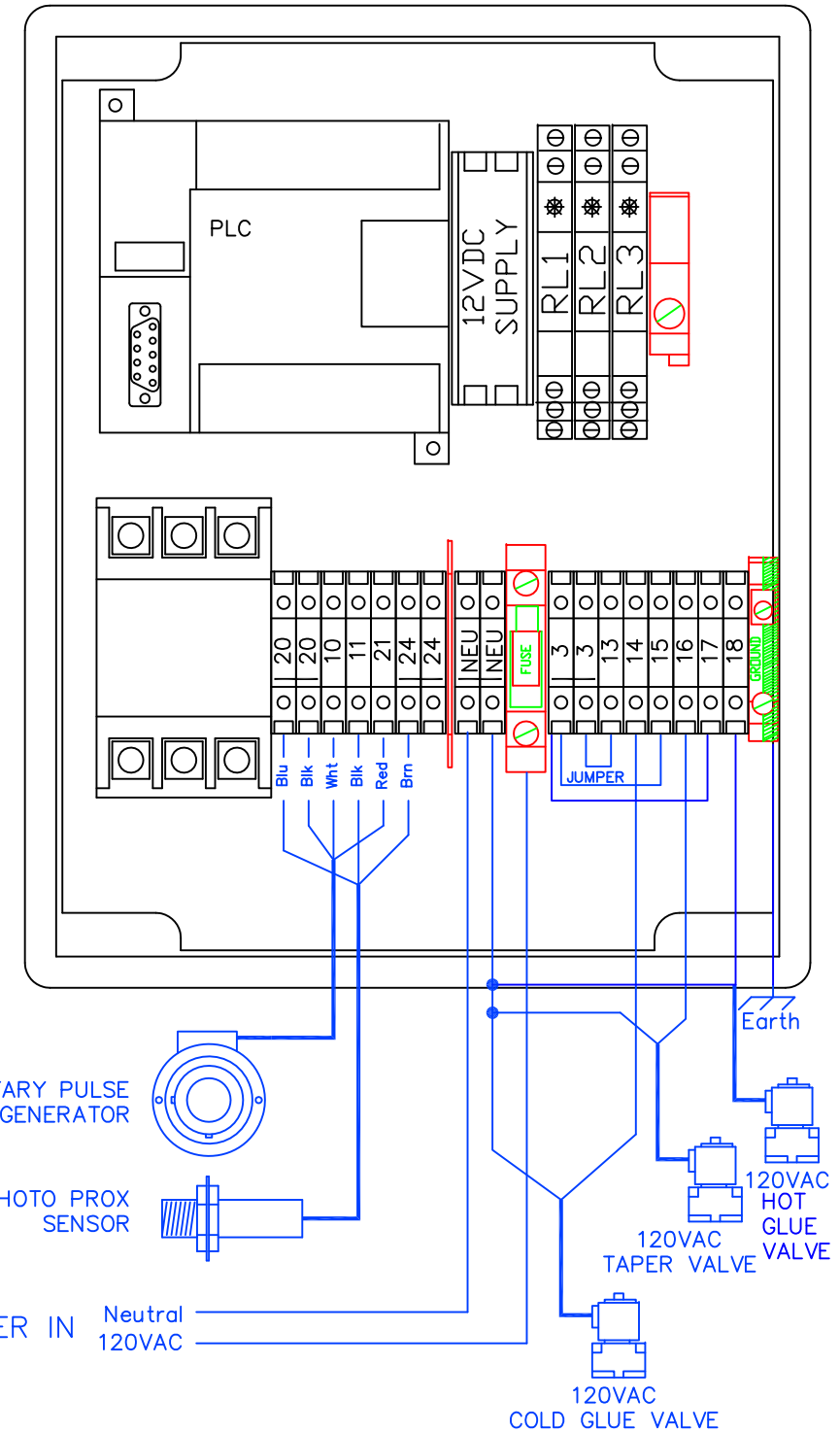
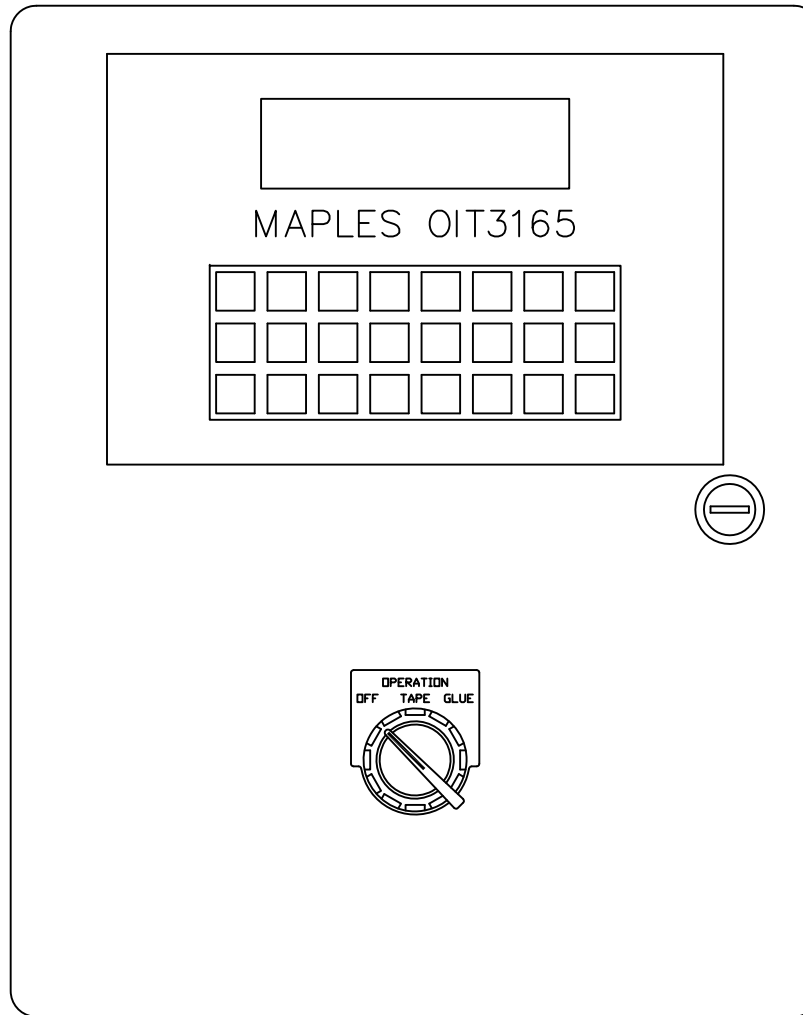
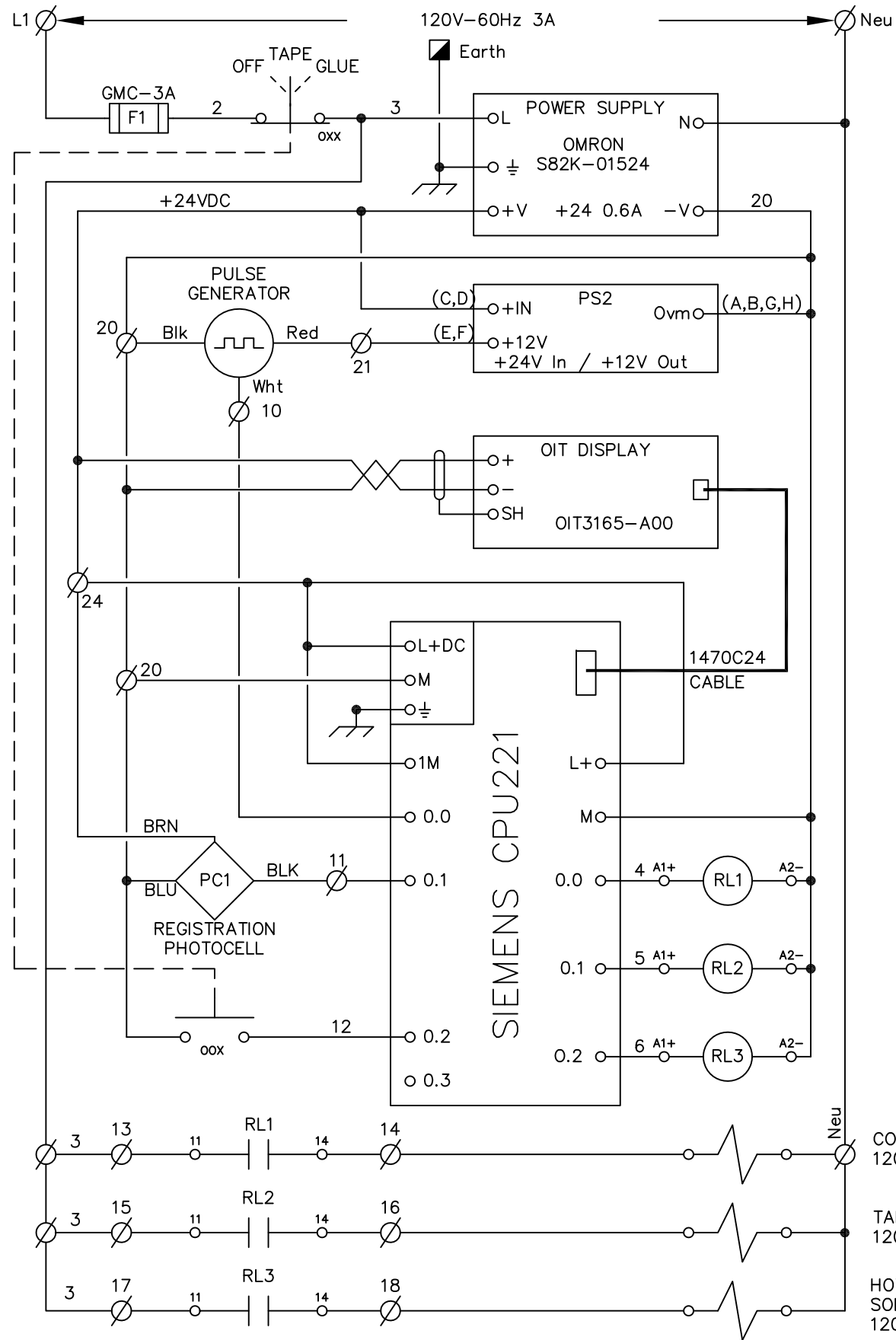
Ref. #	Part #	Part Description
1	C3203	Drive Sprocket, 40-BS14 x 5/8
2	C3191	Conveyor Bearing Assembly
3	C3303	Anti-Rotation Arm
4	C3301	Rotary Pulse Generator
5	C3198	Main Drive Shaft, 15"
6	C3190	Quarter Roll
7	C3192K	Conveyor Drive Sprocket, Keyed
8	C3193	Top Conveyor Shaft
9	C3192	Conveyor Drive Sprocket
10	C3302	Registration Photo Cell



Taper Control	
General Taper	
CRITTENDEN CONVERSION CORP.	
SCALE: 1=8, B	DATE: 2/21/2001
DRAWN BY: GNB	
APPROVED BY: _____	DATE: _____
REVISED: 00/00/00	NOTE REVISION
REVISED: 00/00/00	NOTE REVISION



MFG #	0000
DWG #	30i013-A



ITEM	PART NUMBER
RL1	Phoenix Cont. PLC-BSC-24DC/21
RL2	Phoenix Cont. PLC-BSC-24DC/21
RL3	Phoenix Cont. PLC-BSC-24DC/21

REV	Description	DATE	BY	REV	Description	DATE	BY
1	NEW RELAYS	12/12/00	VS				
2	NEW PS2	10/27/04	VS				
3	HOT GLUE SOLENOID	2/1/08	VS				

CUSTOMER: CRITTENDEN CONVERSIONS


SINGLE NOZZLE GLUE / TAPE
CONTROLLER FOR AC VALVE

DATE: 10/11/00 DRAWN BY: MARSH

SCALE: N/A SHEET: 1 OF 1

B-1498

TITLE: SCHEMATIC
AND
PHYSICAL LAYOUT

 145 N. Hamilton Rd.
CRITTENDEN Conversion Moses Lake 98837
CORPORATION 800-755-7894